

# Romacon Repair Clamp Type RS-0

## ROMACON<sup>®</sup>

Romacon stainless steel repair clamps Style RS-0 are used for permanent repairs of broken and damaged pipes

for water, gas and petrochemical fluids



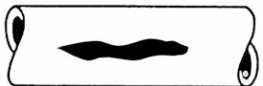
Following types of damage can be repaired:



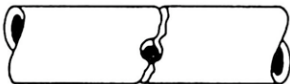
Pipe longitudinal connection



Damage due to broken pipes



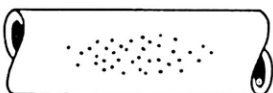
Longitudinal crack



Cracked pipe after hot tap



Misaligned pipes



Pit holes

The clamps can be used to repair the following pipe types:

- Ductile Iron (DI)
- Cast Iron (CI)
- Steel (St.)
- Asbestos Cement (AC)
- PE coated steel
- PVC\*
- GRP\*
- PE\*

\* If pipe repair clamps are to be used on plastic pipes, please always contact Romacon or a Romacon distributor for more information regarding the application and restrictions on these pipe types.

Romacon repair clamps should be used under following conditions:

- For PVC pipes, the width of the clamps should be 50 % longer and bolt torque should be reduced by 50 %. We prefer that you consult your Romacon distributor.
- The maximum allowable distance between two pipe ends should not exceed 10 mm.
- The maximum allowable deflection is 2 degrees.
- The maximum allowable offset should not exceed 3 mm.

The RS-0 repair clamp is in fact a small version of the RS-1 repair clamp, having a range of max. 4 mm. The clamp is used on pipes for which RS-1 clamps are not available due to the small pipe diameter.

RS-0 is available for pipe nominal diameters 1/2" up to 2".

Available length 75 and 150 mm

# Romacon Repair Clamp Type RS-0

## Material specification:

- All metal parts: stainless steel AISI 304 or AISI316L.
- Metal parts have been deburred and are passivated to restore the corrosion resistance to its original state after the welding process.
- Single band (one section) with a working range of max. 4 mm. For an overview of all working ranges please see our pricelist.
- Standard certified rubber gaskets EPDM or NBR. The rubber is tapered and has a waffle pattern.
- Seamless rubber lining for every clamp diameter
- Bridge plate is vulcanized into the rubber gasket
- U-shaped lifter bar.
- Bolts are PTFE (Teflon™) coated to prevent galling.
- Stainless steel washers.
- No loose parts that may get lost during installation.
- No special tools required: a simple wrench will do the job.
- Special tape is used to fix the rubber gasket to the stainless steel band. This tape is flexible and reinforced with glass fibre thread to withstand hot and humid conditions and guarantee a long storage capability.
- Under most circumstances the clamps can be installed without releasing the pressure on the pipe.
- The clamps are packed into strong double-rib cartons. For export overseas we use strong, seaworthy crates



The vulcanized bridge plate guarantees a leakproof sealing

## Available sizes:

Romacon RS-0 clamps are available several different working ranges for pipes of ND 1/2" – ND 2". Please consult our pricelist for more details on the working ranges. Available lengths: 75 and 150 mm.

## Pressure ratings:

Pressure ratings for water \*\* depend on the type of break or damage, pipe OD, medium etc. In general, RS-0 clamps can resist a working pressure of 20 bars.

\*\* Please contact Romacon or your distributor for more information regarding pressures on gas pipes.

## Available rubber gaskets:

Romacon clamps can be supplied with the following types of rubber:

EPDM -1	- potable water - waste water	max 55 degr. C.
EPDM -2	- potable water - waste water	max 150 degr. C.
NBR	- natural gas - potable water - waste water	max 70 degr. C.
Viton	- several chemicals pls contact Romacon	pls. contact Romacon

Our rubber gaskets are certified to European standards, such as ACS (France) and WRAS (UK).

Please contact us for a detailed list of current certifications.



Romacon has been certified to ISO 9001:2008 by Tüv