

Romaccon Repair Clamp Type RS-3

ROMACCON®

Romaccon stainless steel repair clamps Style RS-3 are used for permanent repairs of broken and damaged pipes

for water, gas and petrochemical fluids



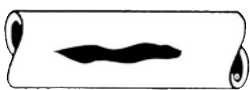
Following types of damage can be repaired:



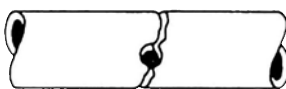
Pipe Longitudinal connection



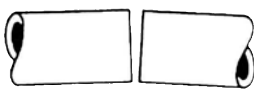
Broken Damage due pipes



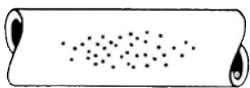
Misaligned cracks



Pin to hot taps



pipes



holes

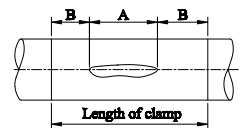
The clamps can be used to repair the following pipe types:

- Ductile Iron (DI)
- Cast Iron (CI)
- Steel (St.)
- Asbestos Cement (AC)
- PE coated steel
- PVC*
- GRP*
- PE*

* If pipe repair clamps are to be used on plastic pipes, please always contact Romaccon or a Romaccon distributor for more information regarding the application and restrictions on these pipe types.

Romaccon repair clamps should be used under following conditions:

- The width of the clamp should be at least equal to the pipe OD.
- The width of the clamp should be 150 mm greater than the length of any crack on pipes with an outside diameter up to 350 mm. On larger pipes this should be at least 200 mm.
- For PVC pipes, the width of the clamps should be 50 % longer and bolt torque should be reduced by 50 %. We prefer that you consult your Romaccon distributor.
- The maximum allowable distance between two pipe ends should not exceed 10 mm.
- The maximum allowable deflection is 2 degrees.
- The maximum allowable offset should not exceed 3 mm.



Romaccon Repair Clamp Type RS-3

Material specification:

- All metal parts: stainless steel AISI 304 or AISI 316L.
- Metal parts have been deburred and are passivated to restore the corrosion resistance to its original state after the welding process.
- Triple band (three sections) with a working range of 30–33 mm depending on the diameter. For an overview of all working ranges please see our pricelist.
- Standard certified rubber gaskets EPDM or NBR. The rubber is tapered and has a waffle pattern.
- Seamless rubber lining for every clamp diameter
- Bridge plates are vulcanized into the rubber gasket
- U-shaped lifter bars.
- Bolts are PTFE (Teflon™) coated to prevent galling.
- Stainless steel washers.
- No loose parts that may get lost during installation.
- No special tools required; a simple wrench will do the job.
- Special tape is used to fix the rubber gasket to the stainless steel band. This tape is flexible and reinforced with glass-fibre thread to withstand hot and humid conditions and guarantee a long storage capability.
- Under most circumstances the clamps can be installed without releasing the pressure on the pipe.
- The clamps are separately packed into strong double-rib cartons. For export overseas we use strong, seaworthy crates



The vulcanized bridge plate guarantees a leakproof sealing

Available sizes

Romaccon RS-3 clamps are available in many different working ranges for pipes of ND 250 – ND 1.000. Please consult our pricelist for more details on the working ranges. Available lengths: 300 / 400 / 500 / 600 / 750 mm. If you need to repair larger pipes we can offer 4 band or 5 band clamps. Please contact us for more information.

Pressure ratings

Pressure ratings for water ** depend on the type of break or damage, pipe OD, medium etc.

Pipe ND 250 up to including ND 500: 6 bar

ND 500 and ND 600: 6 bar

ND 700: 4 bar

Please consult our pricelist for working pressures of larger pipe od's. Our clamps can be modified to cope with higher working pressures.

*** Please contact Romaccon or your distributor for more information regarding pressures on gas pipes.*

Available rubber gaskets

Romaccon clamps can be supplied with the following types of rubber:

EPDM	– potable water – wastewater	max 55 degr. C
EPDM	– potable water – wastewater	max 140 degr. C
NBR	– natural gas – potable water max – wastewater	Max 80 degr. C
Viton	– several chemicals pls contact Romaccon	pls contact Romaccon
Silicone	– several chemicals pls contact Romaccon	pls contact Romaccon

Our rubber gaskets are certified to European standards, such as ACS (France) and WRAS (UK). Please contact us for a detailed list of current certifications.



Romaccon has been certified to ISO 9001-2000 by TÜV